

FASCIA FAMILY

FRAME EXTRUSIONS

are made from high quality and recycled aluminum 6063
 Finish/color -Clear anodized aluminum .
 Possible to paint or to have powder coating finish

PANEL INSERT OPTIONS:

material thickness 2"/0.079mm

- 1. Acrylic (standard)
- 2. Natural Aluminum
- 3. Anodized Aluminum
- 3. Alubond

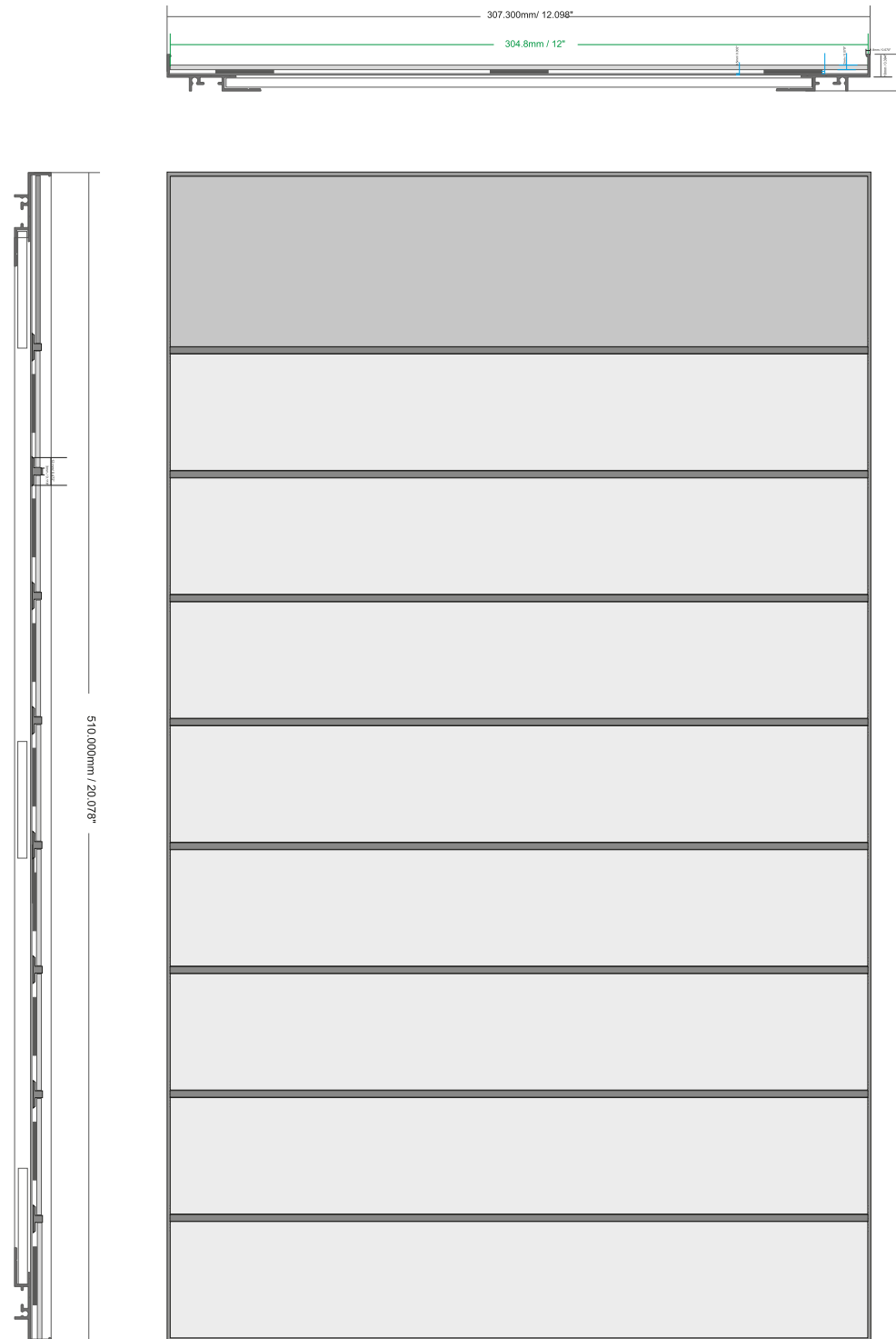
PANEL HEIGHTS

The **height of the frame** will depend on the amount and height of the panels

- option 1: 1" / 25mm
- option 2: 1.5" / 38mm
- option 3: 2" / 51mm
- option 4: 2.5" / 63.5mm
- option 5: 3" / 76mm
- option 6: divider 0.118" / 3mm

MOUNTING

screws



H x W

20" x 12"

508 x 305 mm

| | | | | | |
|--|------------|---------------------------|--------------------------------|------|-------------------------------|
| | Project: | Revisions | Ini- | Date | Part No: EET-FAS-06-03 |
| | Location: | | | | |
| | Date: | | | | Small Directory |
| | Scale: 1:3 | Artist : Name or Initials | all rights reserved to Mirtec® | | |