

FASCIA FAMILY

FRAME EXTRUSIONS

are made from high quality and recycled aluminum 6063
Finish/color -Clear anodized aluminum .
Possible to paint or to have powder coating finish

PANEL INSERT OPTIONS:

material thickness 2"/0.079mm

1. Acrylic (standard)
2. Natural Aluminum
3. Anodized Aluminum
3. Alubond

PANEL HEIGHTS

The **height of the frame** will depend on the amount and height of the panels

option 1: 1" / 25mm

option 2: 1.5" / 38mm

option 3: 2" / 51mm

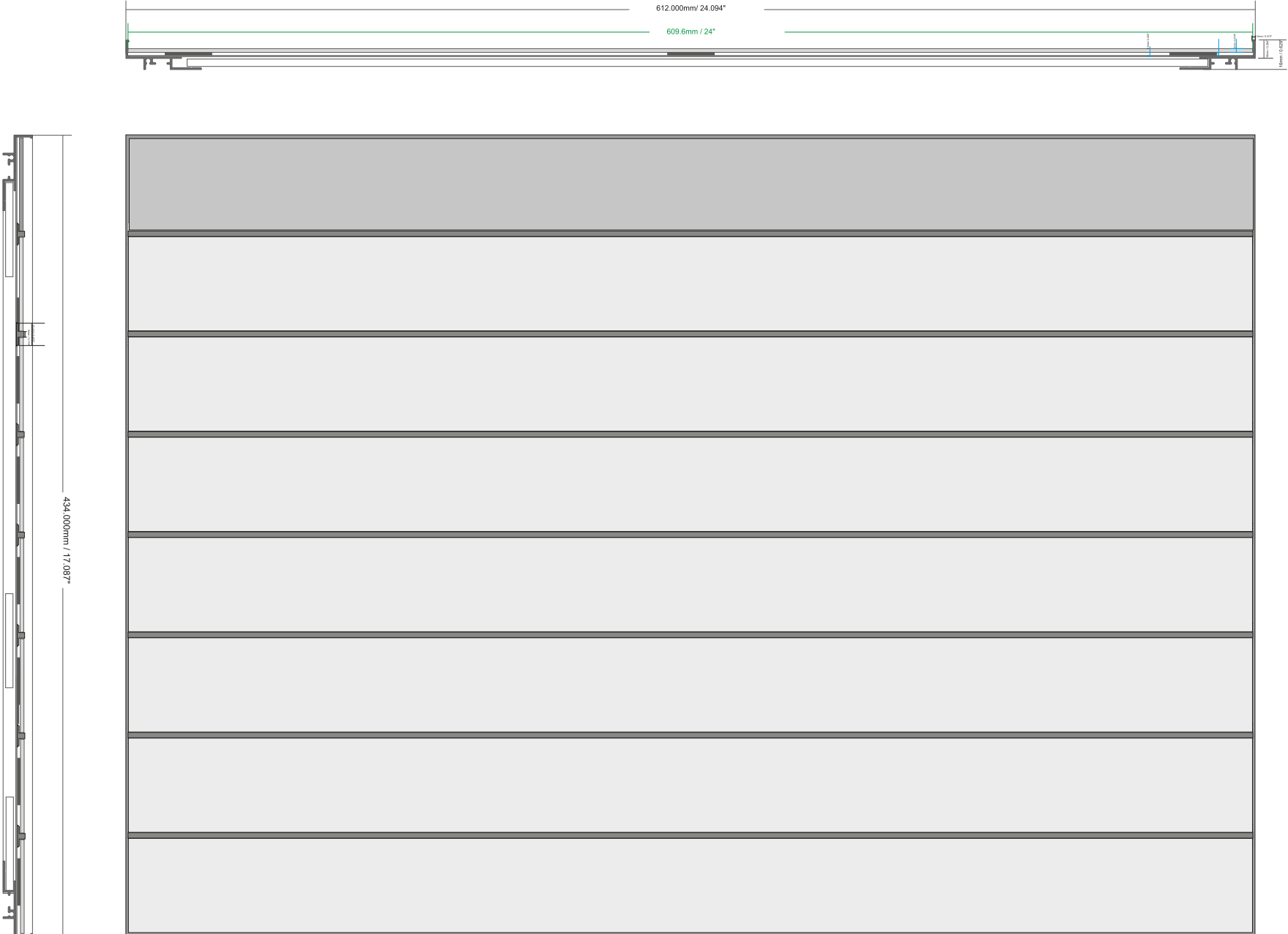
option 4: 2.5" / 63.5mm

option 5: 3" / 76mm

option 6: divider **0.118"** / 3mm

MOUNTING

screws



H x W

17" x 24"

432 x 610 mm

	Project:	Revisions	Ini-	Date	Part No: EET-FAS-07-02
	Location:				SIGN TYPE:
	Date:				Large Directory
	Scale: 1:3 Artist : Name or Initials	all rights reserved to Mirtec®			

07.02